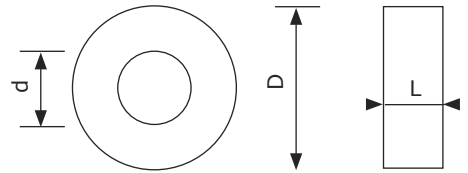


30er Rillenkugellager



Bezeichnung	d Innen Ø	D Außen Ø	L Länge/Höhe	Lagernummer
6006.2RS	30 mm	55 mm	13 mm	825 030 055 013
6206.2RS	30 mm	62 mm	17 mm	825 030 062 017
6306.2RS	30 mm	72 mm	19 mm	825 030 072 019

30er Gelenklager



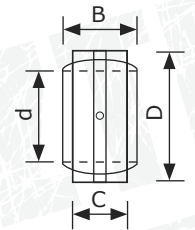
● GE



● GEEM mit Seegering-Einstich



● GEG



Bezeichnung	d Innen Ø	D Außen Ø	B	C	Lagernummer
● GE30ES-2RS	30 mm	47 mm	22 mm	18 mm	810 030 047 022
● GEG30ES-2RS	30 mm	55 mm	32 mm	20 mm	820 030 055 032
● GEEM30ES-2RS	30 mm	47 mm	30 mm	18 mm	812 030 047 030

30er Gelenkkopf



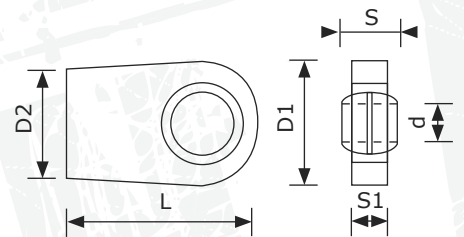
● WSC



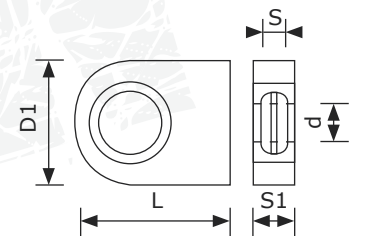
● WGAS



● WAPR



● WSN



Bezeichnung	d	D1	D2	L	S1 Guss	S Lager	Gewinde	Lagernummer
● WS30C	30 mm	73 mm	40 mm	87,5 mm	40 mm	22 mm	-	WS30C
● WS30N	30 mm	65 mm	-	83,5 mm	23 mm	22 mm	-	WS30N
● WGAS30	30 mm	64 mm	56 mm	109 mm	28 mm	22 mm	M24x2	WGAS30
● WAPR30S	30 mm	80 mm	77 mm	125 mm	19 mm	22 mm	M20x1,5	WAPR30S