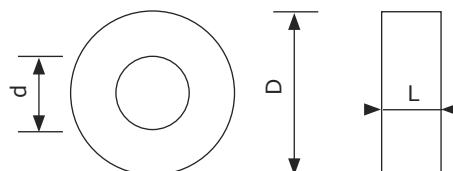


45er Rillenkugellager



Bezeichnung	d Innen Ø	D Außen Ø	L Länge/Höhe	Lagernummer
6009.2RS	45 mm	75 mm	16 mm	825 045 075 016
6209.2RS	45 mm	85 mm	19 mm	825 045 085 019
6309.2RS	45 mm	100 mm	25 mm	825 045 100 025

45er Gelenklager



● GE



● GEEM mit
Seegerring-Einstich



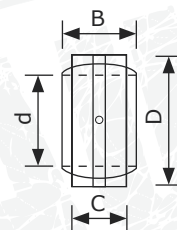
● GEG



● GEEW



● GEWK mit
Seegerring-Einstich

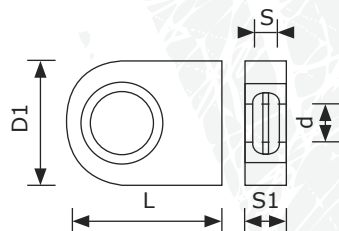


Bezeichnung	d Innen Ø	D Außen Ø	B	C	Lagernummer
● GE45ES-2RS	45 mm	68 mm	32 mm	25 mm	810 045 068 032
● GEG45ES-2RS	45 mm	75 mm	43 mm	28 mm	820 045 075 043
● GEEM45ES-2RS	45 mm	68 mm	40 mm	25 mm	812 045 068 040
● GEEW45ES-2GS	45 mm	75 mm	57 mm	42 mm	811 045 075 057
● GEWK45XS-L021	45 mm	75 mm	57 mm	42 mm	817 045 075 057

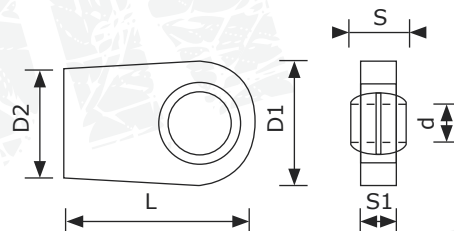
45er Gelenkkopf



● WSN



● WSC



Bezeichnung	d	D1	D2	L	S1 Guss	S Lager	Gewinde	Lagernummer
● WS45C	45 mm	102 mm	58 mm	128 mm	27 mm	32 mm	-	WS45C
● WS45N	45 mm	110 mm	-	132 mm	40 mm	32 mm	-	WS45N