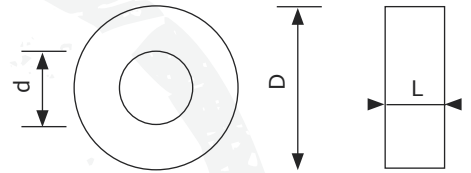


35er Rillenkugellager



Bezeichnung	d Innen Ø	D Außen Ø	L Länge/Höhe	Lagernummer
6007.2RS	35 mm	62 mm	14 mm	825 035 062 014
6207.2RS	35 mm	72 mm	17 mm	825 035 072 017
6307.2RS	35 mm	80 mm	21 mm	825 035 080 021

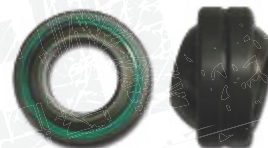
35er Gelenklager



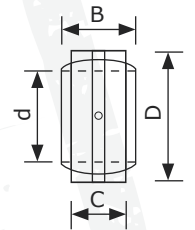
● GE



● GEEM mit Seegering-Einstich



● GEG



Bezeichnung	d Innen Ø	D Außen Ø	B	C	Lagernummer
● GE35ES-2RS	35 mm	55 mm	25 mm	20 mm	810 035 055 025
● GEG35ES-2RS	35 mm	62 mm	35 mm	22 mm	820 035 062 035
● GEEM35ES-2RS	35 mm	55 mm	35 mm	20 mm	812 035 055 035

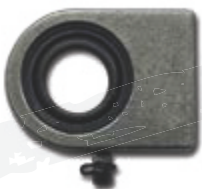
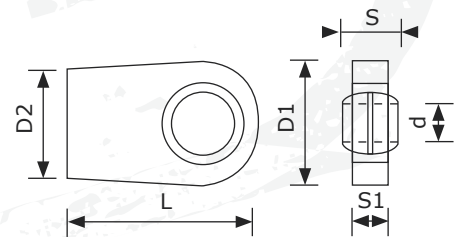
35er Gelenkkopf



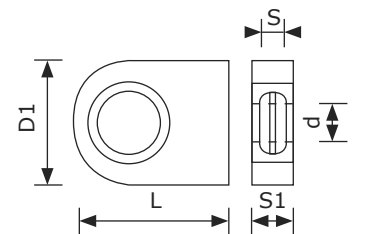
● WSC



● WGAS



● WSN



Bezeichnung	d	D1	D2	L	S1 Guss	S Lager	Gewinde	Lagernummer
● WS35C	35 mm	82 mm	47 mm	102 mm	21 mm	25 mm	-	WS35C
● WS35N	35 mm	83 mm	-	102 mm	30 mm	25 mm	-	WS35N
● WGAS35	35 mm	78 mm	66 mm	132 mm	30 mm	25 mm	M30x2	WGAS35

35 mm