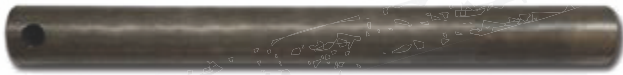


## 1.1/4"er UNI - Wellen mit Splintbohrung



Ø	Bohrung	L	A	Material	Lagernummer
1.1/4" (31,75 mm)	11 mm	350 mm	11 mm	42CrMo4*	■ ● ● ● ● ● 947 032 350 011 ●



Wir empfehlen optional Klappstecker

Deutsch  
 ● 841 042 041 008  
 ● 841 042 041 010

British  
 ● 841 044 041 011

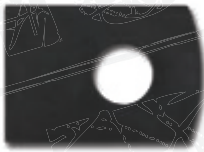


Wir empfehlen optional Splint

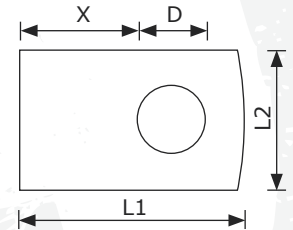
■ 10x63 mm

841 094 010 063

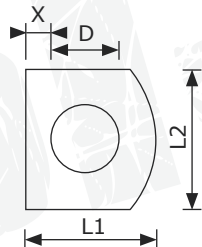
## 1.1/4"er/32-35er Laschen



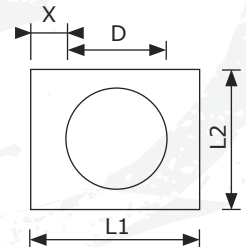
● LA 00



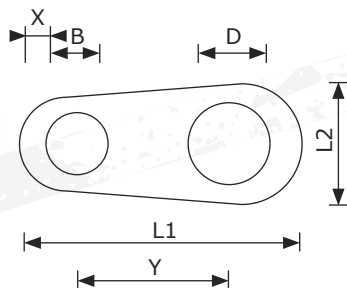
● LA 02



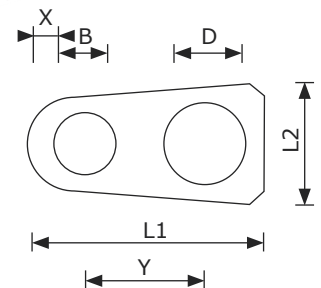
● LA 03



● LA 04



● LA 05



Art	D Ø	L1	L2	X	Y	B	Stärke	Lagernummer
● LA 00	32 mm	100 mm	70 mm	44 mm	-	-	8 mm	901 032 100 070
● LA 00	35 mm	100 mm	70 mm	42 mm	-	-	8 mm	901 035 100 070
● LA 02	35 mm	47 mm	40 mm	6 mm	-	-	8 mm	901 035 047 040
● LA 03	35 mm	50 mm	40 mm	7 mm	-	-	8 mm	901 035 050 040
● LA 04	35 mm	95 mm	45 mm	12 mm	56 mm	22 mm	8 mm	901 035 095 045
● LA 05	35 mm	80 mm	50 mm	11 mm	40 mm	18 mm	8 mm	901 035 080 050

\* 72h langzeit gasnitriert, gehärtet und geschliffen  
 Laschen nicht gehärtet! Material ST52-3

30 mm - 1.1/4" (31,75 mm)